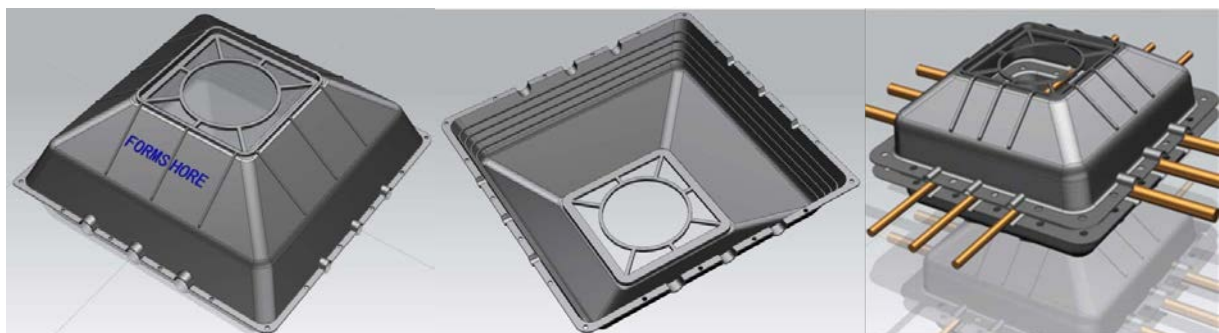


## Protech™ Modular Mattress System

**Engineered by Formshore Teknik**, the Protech™ Mattresses system offers a unique method of fabricating Concrete Articulating Mattresses. Utilizing easily transportable HDPE Shells this portable system allows for large numbers of mattress to be manufactured quickly and efficiently at the proposed project load out location. This may be the client's supply base, the load out port or, in some cases, a support vessel or barge.

**Protech™ mattresses** are simple to use easily deployed. Once the mattress size is determined construction begins with the assembly our modular designed HDPE shell bases structural and lifting ropes are then positioned to specification. The top shells are then connected after which the cement pour can commence.

**The concrete mix** is then vibrated to comply with engineering requirements. Compressive strength cube tests are taken to ensure compliance of supplied cement, and processed data is available upon request once the mattress is cured it is ready for transportation. Protech™ Mattresses should have a minimum of 48 hrs curing time after casting prior to lifting. The Polypropylene Lifting ropes used in Protech™ manufacture are UV stable.





## Key Features

- Mattresses are articulating in all directions and have all soft edges making them a suitable medium against scour.
- Mattresses may be made up at Formshore works or at the client's nominated supply base, thereby minimizing handling and freight.
- Mattress sizing can easily be modified to meet changing project requirements without the need for time consuming and costly alteration to steel molding systems.
- Mattresses are cast with certified UV stable polypropylene rope embedded in the mattress, allowing crane handling. Polypropylene does not rot mildew, degrade and are impervious to continuous immersion in sea water.

## Speed of Installation

- Up to 120m<sup>2</sup> of mattress completed per day

## Removal at a Later Date

- Lifting ropes do not degrade subsea, allowing removal at a later date.



	<b>Series 20</b>	<b>Series 30</b>	<b>Series 40</b>	<b>Series 50</b>
<b>Dimensions (cm)</b>	50 x 50	50 x 50	50 x 50	50 x 50
<b>Block Height (cm)</b>	20	30	40	50
<b>Weight in Air (Kg)</b>	60	100	145	185

