

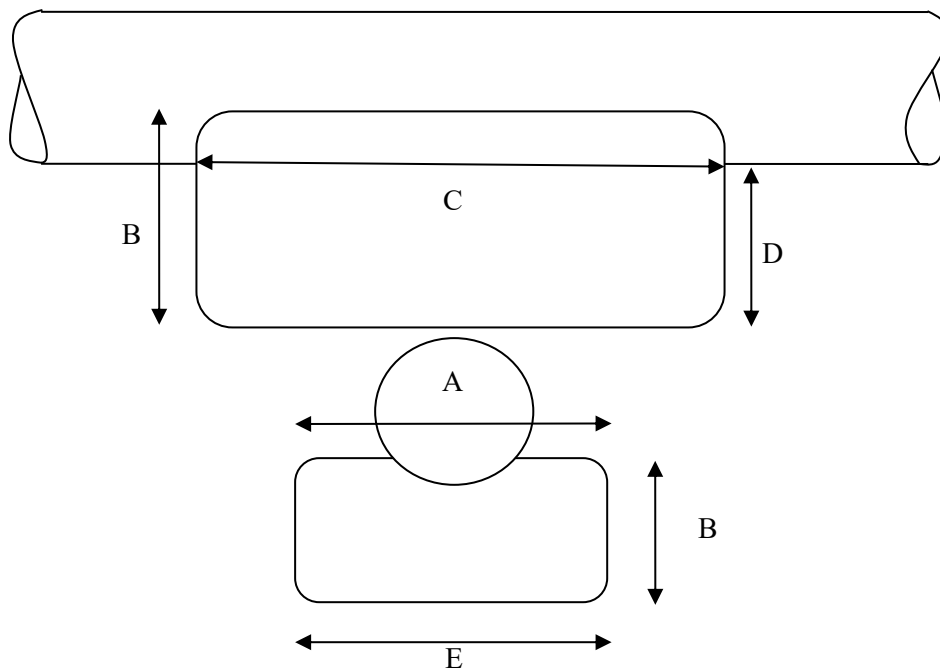
## Pillow Bag Range Data Sheet

PB- 60-300 & PB-60-500 Suitable for external pipeline diameters 4” - 24”  
 PB- 120-300 & PB-120-500 suitable for external pipeline diameters 24” - 48”

The Formshore range of Pillow formwork covers areas where short shallow scours require rectification. Apart from being an economical solution for pipeline supports, pillow bags add stabilisation to pipelines in terms of weight and stability.

Model	Top Width A	Formwork Height B	Support Length C	Max Support Height D	Formwork Base E	Grout Injection Points	Total Volume m3
PB 60/300	1000	450	1000	<b>300</b>	1000	1	0.45
PB 60/500	1000	650	1000	<b>500</b>	1000	1	0.65
PB 120/300	1800	450	1800	<b>300</b>	1800	1	1.458
PB 120/500	1800	650	1800	<b>500</b>	1800	1	2.106

Note: All formwork dimensions are in millimeters (mm)



Product Finished Tolerances are +/- 3%

Subject to change without notification